



LEEDS DOMESTIC  
WATERUSERS ASSOCIATION

A private non-profit, shareholder owned culinary water utility.

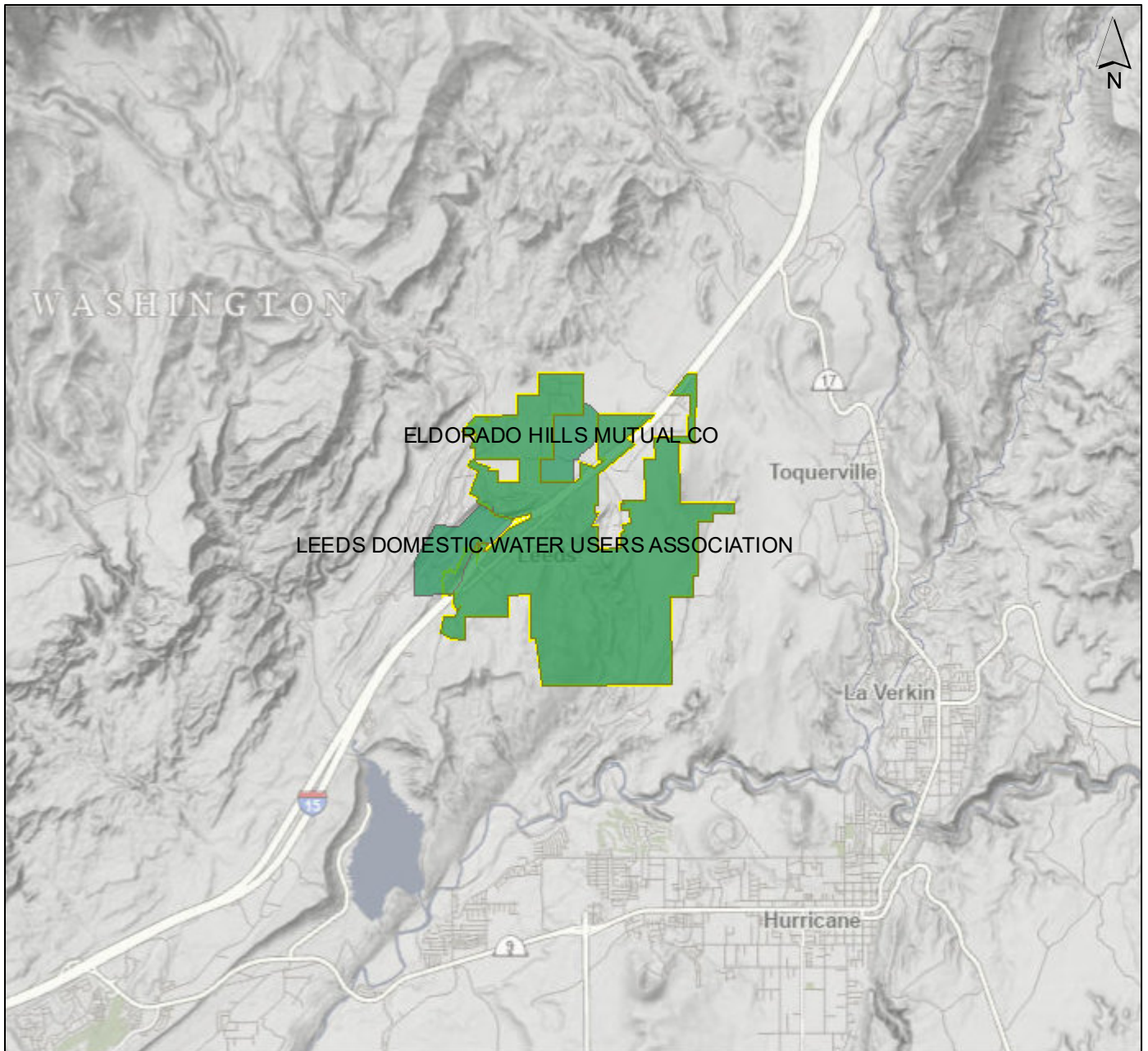


# Utah Environmental Interactive Leeds Maps

Updated November 2023




# Printed from the Utah DEQ Interactive Map



11/29/2023

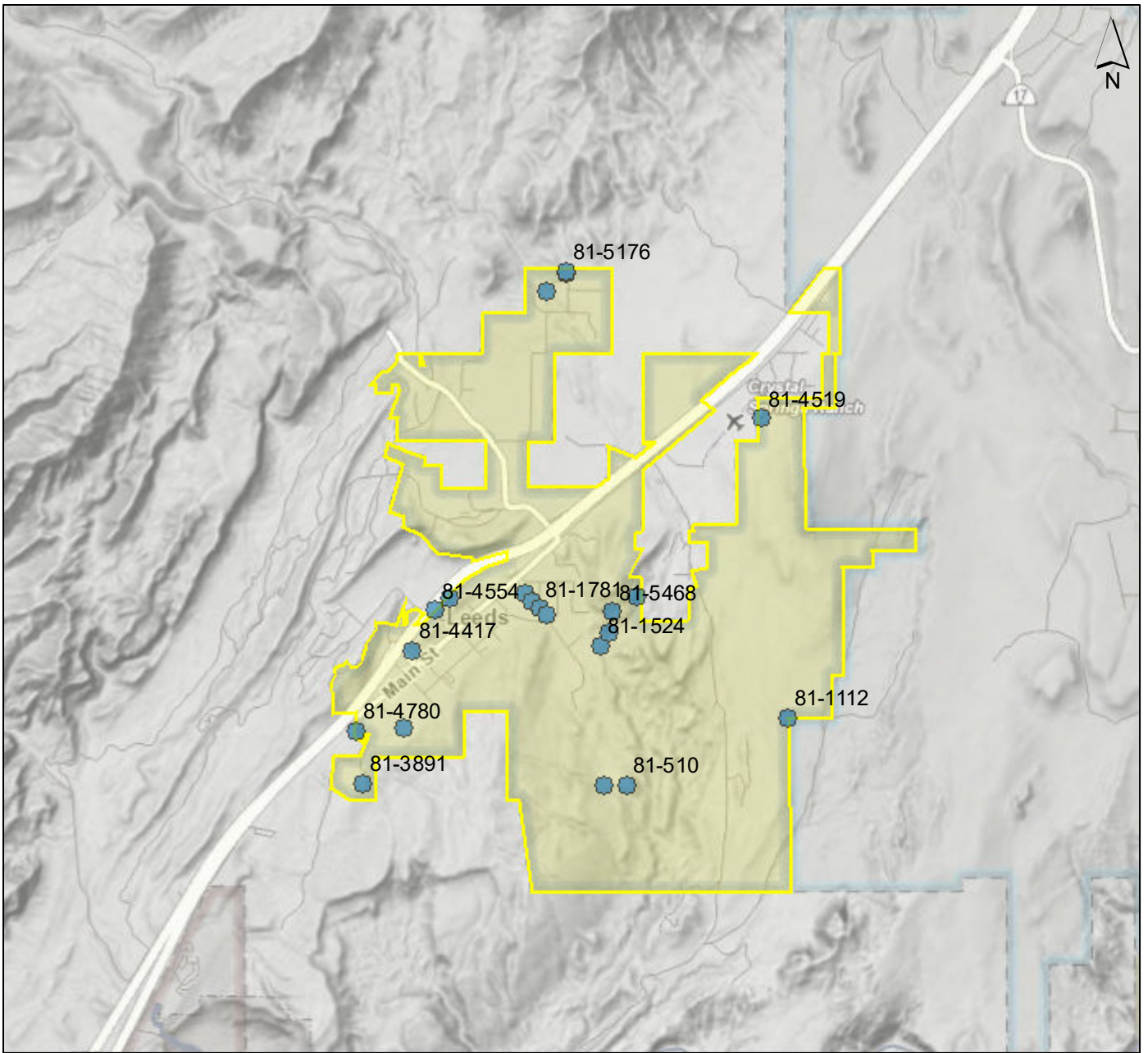
1:144,448

## Drinking Water System Ratings

 Approved



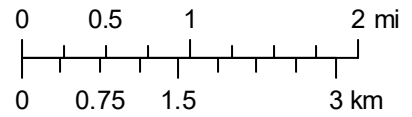
# Printed from the Utah DEQ Interactive Map



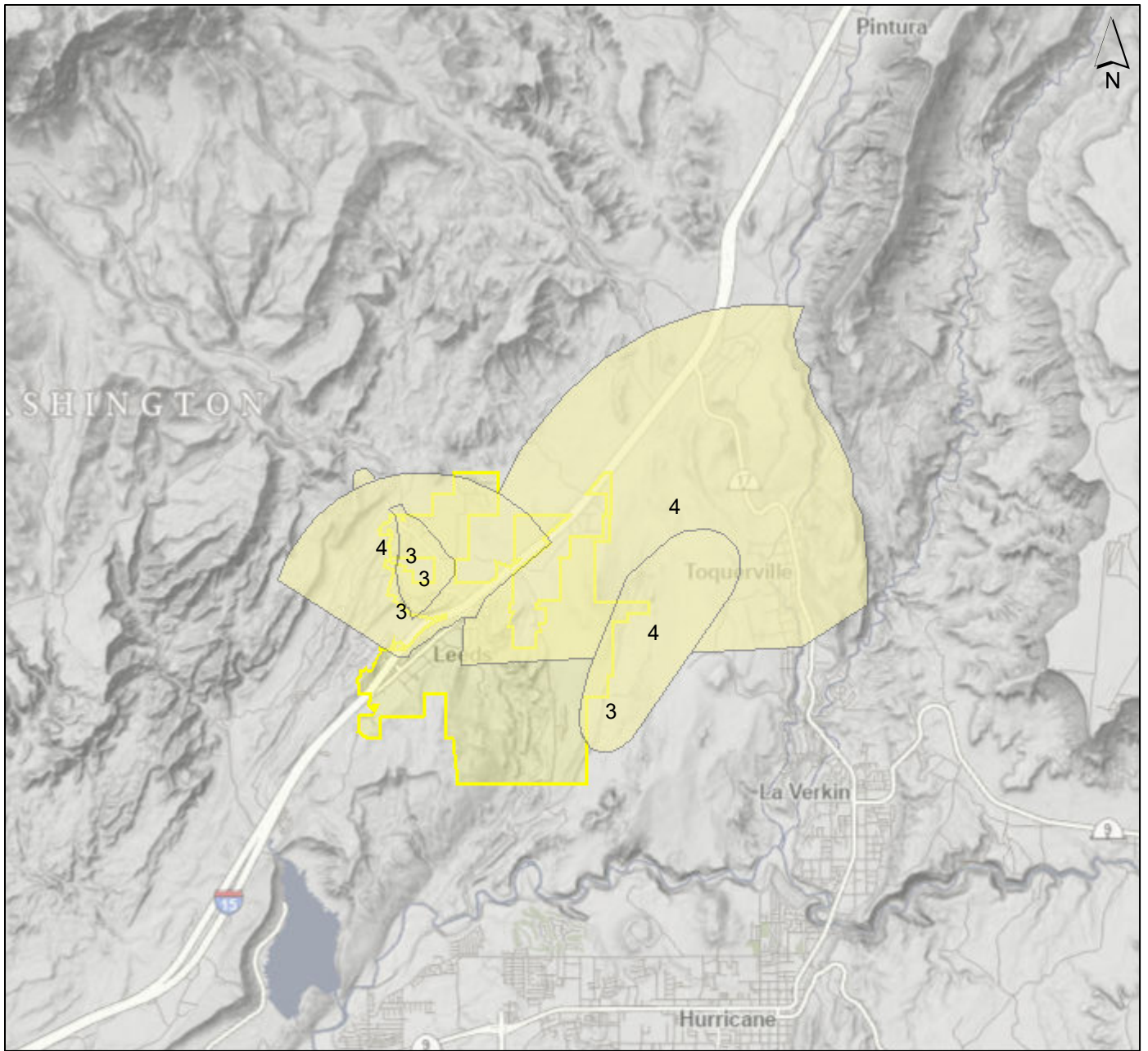
11/29/2023

1:72,224

● Water Rights Points of Diversion



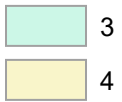
# Printed from the Utah DEQ Interactive Map



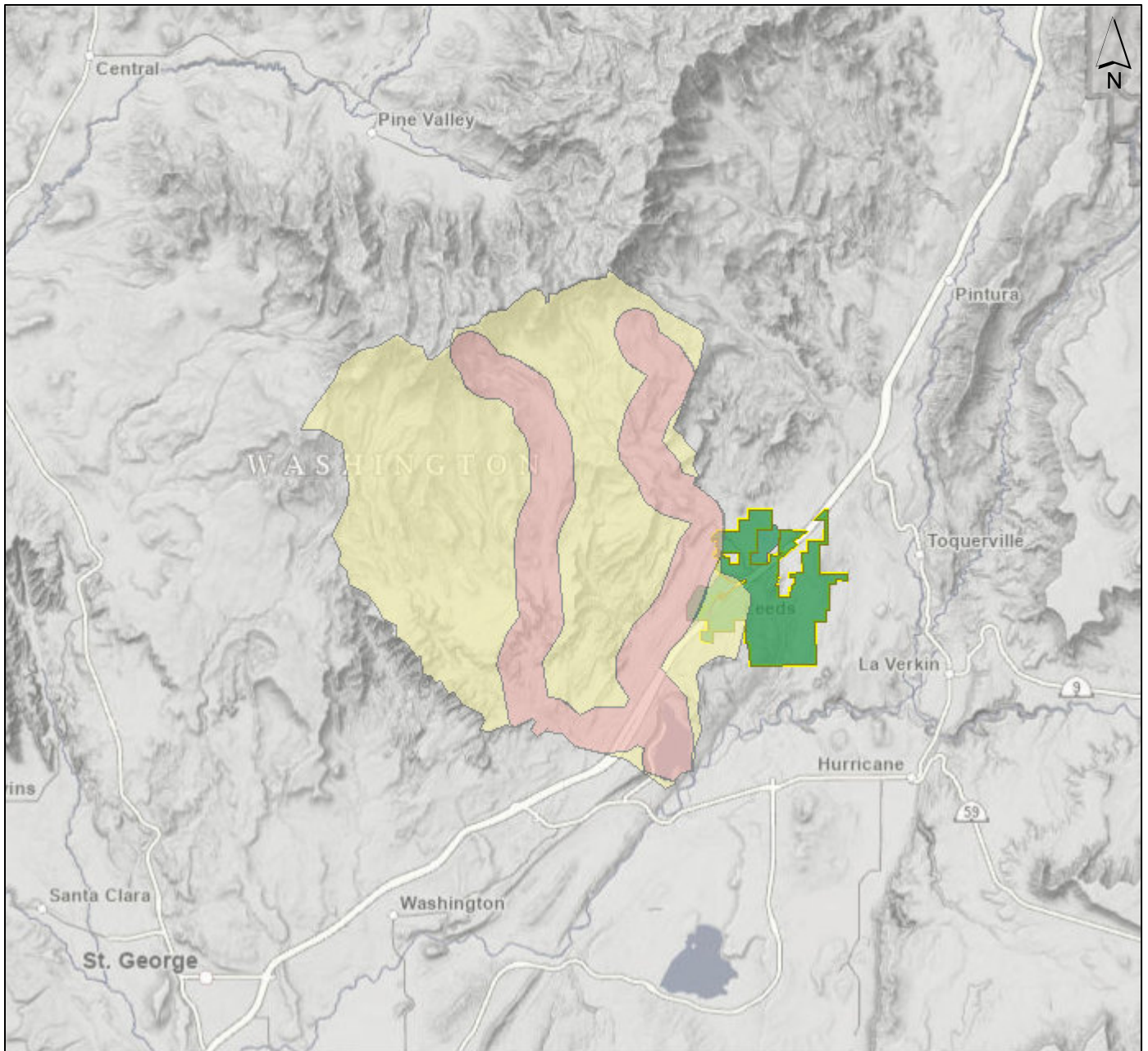
11/29/2023

1:144,448

## Ground Water Protection Zones



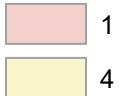
# Printed from the Utah DEQ Interactive Map



11/29/2023

1:288,895

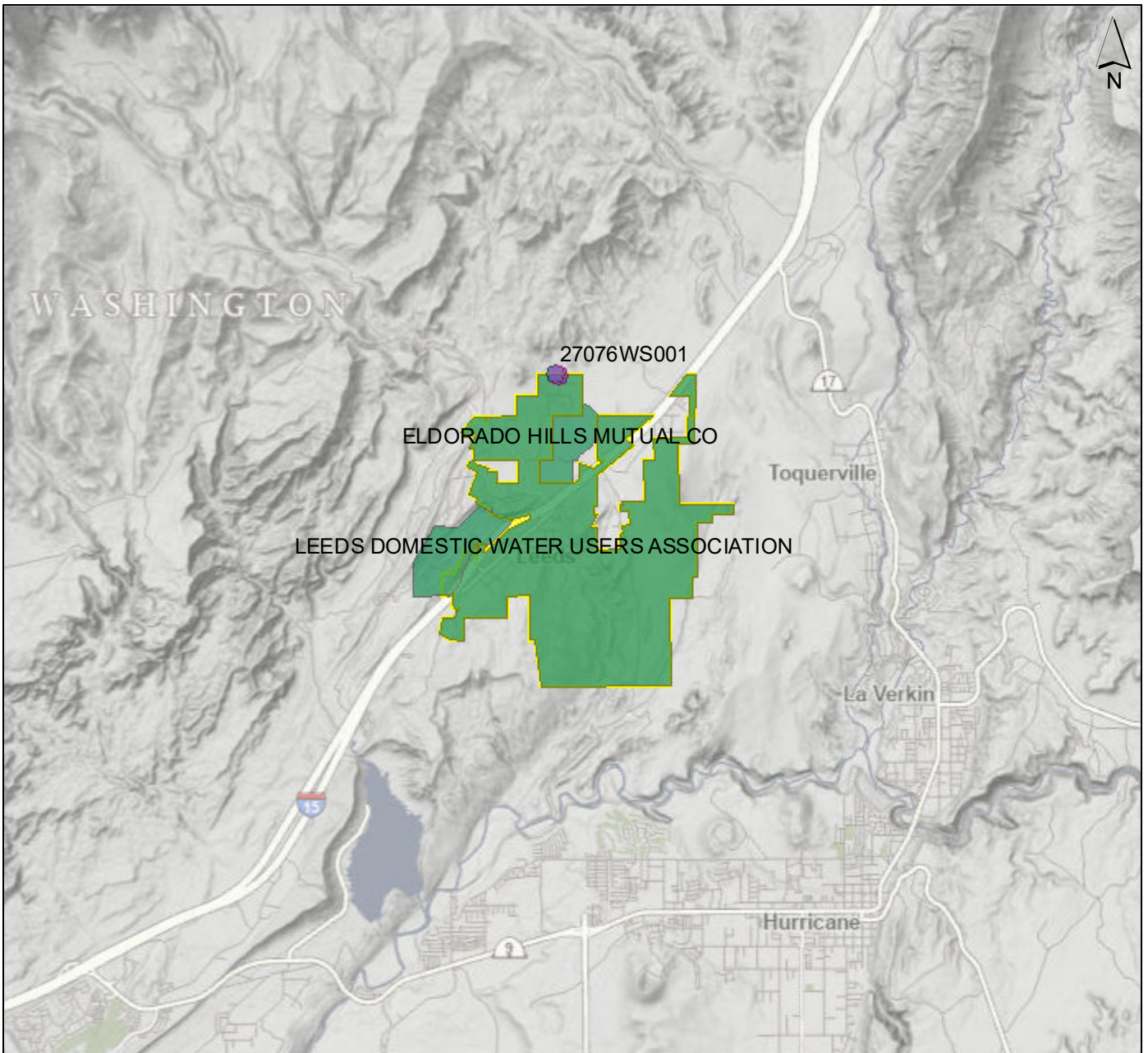
## Surface Water Protection Zones



## Drinking Water System Ratings



# Printed from the Utah DEQ Interactive Map



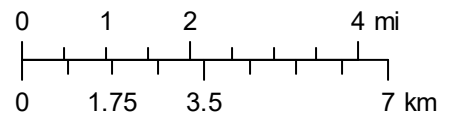
11/29/2023

1:144,448

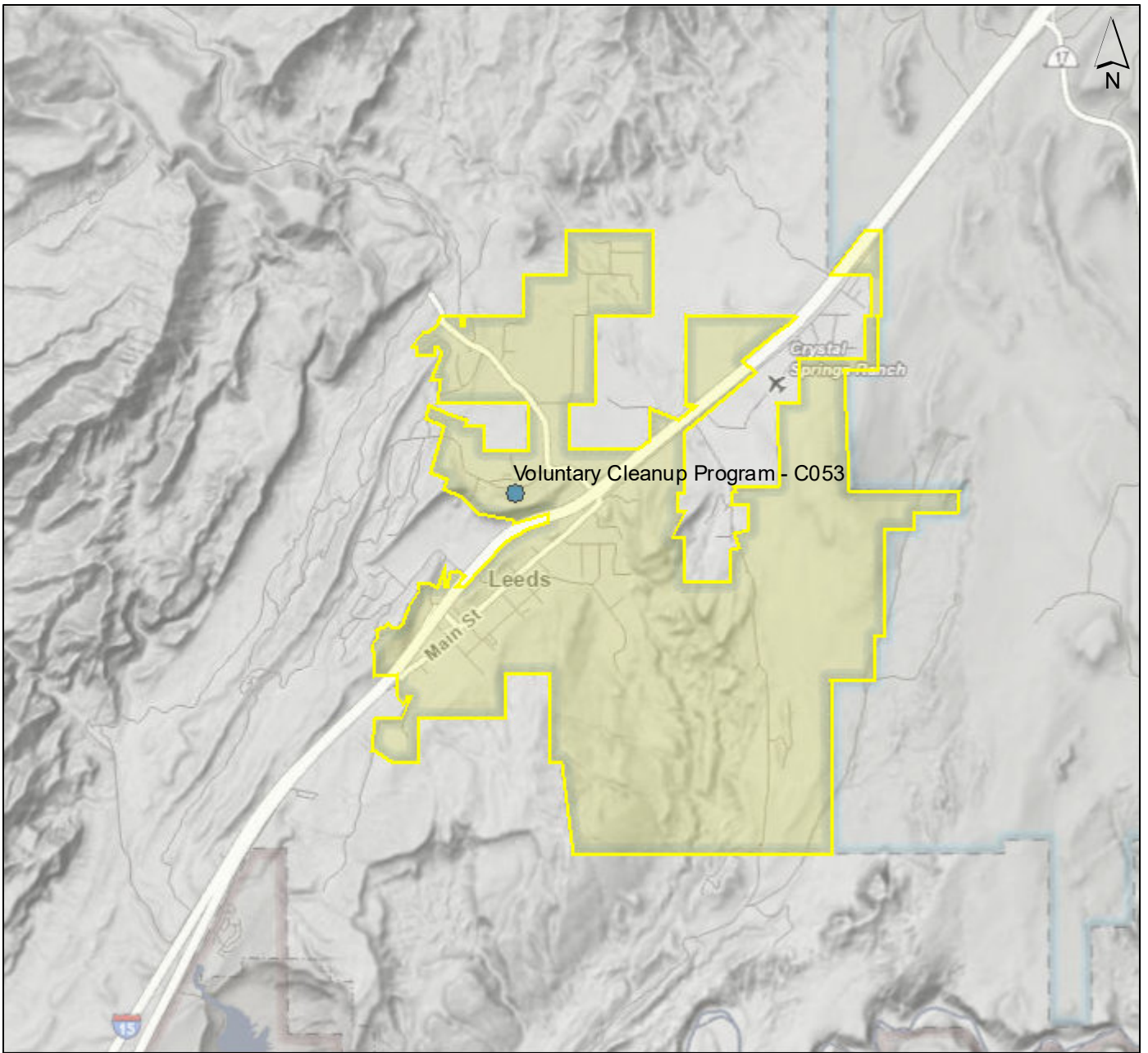
● Public Water System Facilities

### Drinking Water System Ratings

■ Approved



# Printed from the Utah DEQ Interactive Map



11/29/2023

1:72,224

● Voluntary Cleanup Program

